



All Rights Reserved

Materials and specifications are subject to change without notice.  
Featured machines in photos may include additional equipment.  
See your XCMG dealer for available options.



# XC948/XC949

Tier3 Engine Tier4 Final Engine

## Wheel Loader



[www.xcmg.com](http://www.xcmg.com)

### XCMG Regional Departments:

Europe	(+86-516) 87739238 87739271 87739228	Africa	(+86-516) 87735009 87739222 87739283
West Asia & North Africa	(+86-516) 87739252 87739202 87739223	Central Asia	(+86-516) 87739218 87739236 87739538
Asia-Pacific	(+86-516) 87739500 87739529 87739233	America	(+86-516) 87739285 87739551 87739715

XCMG NORTH AMERICA CORPORATION

Add: 5145 Schirlls St. Las Vegas, NV 89118

Tel: +1 407 9689320

E-mail: [jack-xie@xcmg.com](mailto:jack-xie@xcmg.com)

XUZHOU CONSTRUCTION MACHINERY GROUP IMP. & EXP. CO., LTD

Add: No.1, Tuolanshan Road, Xuzhou Economic Developing Zone, Jiangsu, China 221004

Fax: (+86-516) 87739230

E-mail: [export@xcmg.com](mailto:export@xcmg.com)

### Engine

XC948	Model :	Cummins QSB6.7
	Rated Power :	129/2200 kW/rpm 173/2200 hp/rpm

XC949	Model :	Cummins QSB6.7
	Rated Power :	129/2100 kW/rpm 173/2100 hp/rpm

### Operating Specifications

Operating Weight :	15900 kg 35053 lb
--------------------	----------------------

Operating Weight :	16400 kg 36155 lb
--------------------	----------------------

### Bucket Capacity

Standard Capacity :	2.4m <sup>3</sup> 3.14yd <sup>3</sup>
---------------------	--

Standard Capacity :	2.4m <sup>3</sup> 3.14yd <sup>3</sup>
---------------------	--

## OVERVIEW

XC948 and XC949 are developed by XCMG for North American market integrating advanced design idea .XC948 meets EPA Tier3 emission standard and XC949 meets EPA T4F emission standard , its overall design fits human aesthetic, the rear flip engine hood and side flip cab makes its maintenance more convenient. XC948 and XC949 are comfortable in operation, fuel-efficient, reliable and durable.



## PERFORMANCE AND FEATURES

### High Reliability

- ▶ Cummins QSB6.7 Engine , complying with Cummins QSB6.7 Engine providing power of complex working conditions and providing power of complex working conditions.
- ▶ Automatic 4BP 190 torque converter, reduced shifting impact in travelling for various working conditions.
- ▶ XCMG high performance wet axle, meeting high loaded working requirements.
- ▶ Full hydraulic wet brake system of high reliability and maintenance free.
- ▶ Extra heavy load frame structure design, FEA analysis on key structural to ensure strong structure and extended machine life.
- ▶ Wear-resistance and impact-resistance high strength steel plate for bucket material.



### High Working Efficiency

- ▶ Optimized linkage structure and hydraulic system with breakout force up to 120kN.
- ▶ JRB is the first choice for Quick Coupler in North America.
- ▶ The coupler controls are conveniently located in the Cab.
- ▶ Bucket features discharge at high position, auto leveling and lifting limited technologies, reducing working cycle time.
- ▶ Travel speed up to 36km/h with high transfer efficiency.



## Comfort Operation

- ▶ Spacious and ergonomic cab with excellent visibility.
- ▶ FOPS/ROPS cab with heat and air conditioning provides good air flow through multiple vents.
- ▶ The cab is well seated and insulated to provide a dust proof environment.
- ▶ All switches are conveniently placed.
- ▶ Digital gauges monitor the machine vital functions.
- ▶ Suspension seat with lumbar support reduce operator fatigue.
- ▶ Integrated F-N-R pilot control lever of shifting function for precise control, easy operation and high working efficiency.



## High Safety Performance

- ▶ Complying with standards of ISO 5006 operator vision field.
- ▶ Complying with standards of ISO 3449, ISO 3471, ISO 3164 ROPS/FOPS cabs.
- ▶ Complying with standard of ISO 2867, ISO 2860 ladders, passageway, operation platform and exit/ excess.
- ▶ Flame retardant material applied in cab interiors, extinguisher equipped.
- ▶ Complying with standards of ISO 10533, ISO 10570 lifting arm bracket and hinged lock devices.



## Easy Maintenance

- ▶ Rear tilted side engine hood, easier engine and radiator maintenance and repair.
- ▶ Side tilted cab for easier maintenance of transmission and pipe lines.
- ▶ Centered electrical fuse box for effortless check up and high reliability.
- ▶ Remote centered lubrication, drainage pressure testing of daily maintenance.



## Energy Saving

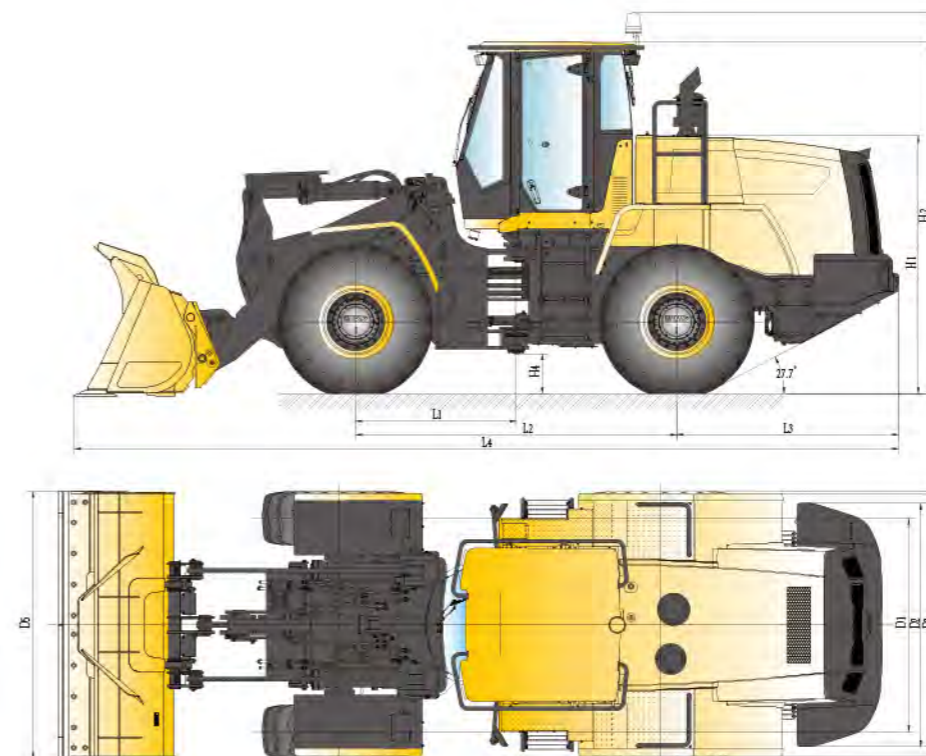
- ▶ Load sense hydraulic system featuring automatic adjusting operation condition, improving fuel efficiency.
- ▶ Intelligent independent cooling system, fan rotation on request for energy and noise reduction. Separated cooling layout with improved cooling efficiency and fuel efficiency.
- ▶ Full automatic torque converter, two working mode, enabling the operator match the optimum efficiency according to working requirement.
- ▶ Pilot control lever integrating F-N-R shifting function minimizing operation motions with higher working efficiency.
- ▶ Improved traveling performance and load retention.



**TECHNICAL SPECIFICATIONS**

Item	Metric		US	
<b>Overall Dimensions</b>				
Overall length (bucket on the ground)	XC948: 7962mm	XC949: 7962mm	313.46(in)	
Bucket width	2580mm	2580mm	101.57(in)	
Overall height (Cab ceiling)	3400mm	3400mm	133.86(in)	
Wheel base	3100mm	3100mm	122.05(in)	
Tread	2060mm	2060mm	81.10(in)	
Min. Ground clearance	385mm	385mm	15.16(in)	
<b>Specifications</b>				
Bucket Capacities	2.4m <sup>3</sup>	2.4m <sup>3</sup>	3.14(yd <sup>3</sup> )	
Operating weight	15900kg 35053(lb)	16400kg 36155(lb)		
Engine	Model	QSB 6.7(Tier 3)	QSB 6.7(Tier 4f)	
	Rated power	129kW	129kW	172(hp)
	Rated speed	2200r/min 2200(rpm)	2100r/min 2100(rpm)	
Traveling speeds	Forward I / Reverse I	7.3km/h	7.3km/h	4.54mile/h
	Forward II /Reverse II	12.5km/h	12.5km/h	7.77mile/h
	Forward III /Reverse III	23.5km/h	23.5km/h	14.61mile/h
	Forward IV	36km/h	36km/h	22.37mile/h
Max. Tractive force	129kN	129kN	29000(lbf)	
Max. Climbing gradient	28°	28°		
Unloading from highest position	Dumping angle	45°	45°	
	Max. Dumping height	2770mm	2770mm	109.1(in)
	Dumping reach	1140mm	1140mm	44.88(in)
Max. Breakout force	120kN	120kN	27000(lbf)	
Raising time	≤6s	≤6s		
Total cycling time	≤10.8s	≤10.8s		
Min. Turning radius	Outside of the bucket	6400mm	6400mm	252(in)
	Rear outer tire	5690mm	5690mm	224(in)
	Center of the tyre	5410mm	5410mm	213(in)
Turning angle of the frames	±40°	±40°		
Tire size	20.5	20.5		
Inflation pressure of tire	Front wheel	0.38~0.40MPa	0.38~0.40MPa	
	Rear wheel	0.32~0.34MPa	0.32~0.34MPa	
Fuel (diesel)	220L	220L	58gal	
Engine oil	20L	20L	5.28gal	
T/M & T/C oil	35L	35L	9.25gal	
Hydraulic reservoir	160L	160L	42.27gal	
Single Axle	55L	55L	14.53gal	

Note: the job content of standard machine is as below: moderate all kinds of lubricants, full fuel oil and the operator with the weight of 75kg.

**OUTLINE DIMENSIONS**


	Metric	US
H1	2495mm	98.23"
H2	3400mm	133.86"
H3	3677mm	144.76"
H4	385mm	15.16"
L1	1550mm	61"
L2	3100mm	122.05"
L3	2144mm	84.4"
L4	7962mm	313.46"
D1	2060mm	81.10"
D2	2350mm	92.52"
D3	2543mm	100"
D4	2580mm	101.57"
D5	2580mm	101.57"

**OPTIONAL CONFIGURATIONS**

- 20.5R25 radial tires
- ride control system
- emergency steering system
- low temperature start system
- automatic centered lube system
- closed rear fender
- machine protection in landfill
- lengthened boom
- various buckets (or customized)
- several attached tools